

# MHYC

MIDDLE HARBOUR YACHT CLUB

# Super 12 Spring Regatta

24 & 25 November, 2018

# SAILING INSTRUCTIONS

*Held in conjunction with the Sydney Short Ocean Racing Championship and Seven Islands Race*  
[www.ssorc.mhyc.com.au](http://www.ssorc.mhyc.com.au)

**Organising Authority**

Middle Harbour Yacht Club

Lower Parriwi Road, The Spit Mosman, NSW 2088

PO Box 106, Seaforth, NSW 2092

P: 02 9969 1244 E: [sailing@mhyc.com.au](mailto:sailing@mhyc.com.au) W: [www.mhyc.com.au](http://www.mhyc.com.au)



ROBERT OATLEY

KEY SUN  
ZINKE



# Super 12 Spring Regatta

## 24 & 25 November 2018

### SAILING INSTRUCTIONS

#### 1.0 RULES

- 1.1 The Organising Authority for the event is the Middle Harbour Yacht Club (MHYC).
- 1.2 The Race will be governed by;
  - a) the 2017-2020 Racing Rules of Sailing (RRS),
  - b) the 2017-2020 Special Regulations of Australian Sailing (AS),
  - c) the Super 12 Class Rules;
  - d) the 2017-2018 Season MHYC Notice of Race (MHYC NOR );
  - f) this Notice of Race (NoR) and the Sailing Instructions (SI) and by,
  - g) RRS Addendum Q.
- 1.2 The attention of competitors is drawn to the MHYC NOR which are referenced throughout these SIs including their responsibilities under the applicable NSW Maritime legislation.
- 1.3 A boat shall comply with the Special Regulations Part 1 for Category 7. An audited Special Regulations Form for the relevant Category (or higher) shall be submitted with the entry if not already held by MHYC.
- 1.4 The Sailing Office of MHYC shall be the Race Committee ("RC") for the purposes of, and with, the powers and discretions contained in RRS 90.1. This amends MHYC NOR 4.2.
- 1.5 Fixed and retractable spinnaker poles and bowsprits will be permitted for the purpose of setting asymmetrical spinnakers. This amends RRS 50.2 and 50.3.
- 1.6 Boats with movable or variable ballast (within the meaning of those terms in the Special Regulations) may move that ballast for the purpose of changing trim or stability. This amends RRS 51.
- 1.7 RRS 52 is changed so that it does not apply to the adjustment and operation of sails or the adjustment of movable appendages on any boat.
- 1.8 Pennants may be provided by the event sponsors. If provided, pennants shall be flown from the backstay at all times whilst racing. Boats failing to comply with this may be protested by the Race Committee only. This alters RRS 60.1 and 60.3.

#### 2 NOTICES TO COMPETITORS

- 2.1 Notices to Competitors will be posted on the Official Notice Board which is located in the Breezeway of the Clubhouse.

#### 3 CHANGES TO THE SAILING INSTRUCTIONS

- 3.1 Any change to the Sailing Instructions will be posted before 0830hrs on the day it will take effect except that any change to the schedule of races will be posted prior to 1800hrs on the day before it will take effect.
- 3.2 Any change to the Sailing Instructions made 'afloat' will be indicated by the display of Code Flag L and accompanied by two sound signals. The change will be communicated on the designated course VHF channel and/or displayed on the committee boat.

#### 4 SIGNALS MADE ASHORE

- 4.1 Signals made ashore will be displayed from the Signal Mast adjacent to the MHYC Starters Box, located in the North Eastern corner of the Club premises.
- 4.2 When flag AP is displayed ashore, '1 minute' is replaced with 'not less than 60 minutes' in the race signal AP.

## 5 SCHEDULE OF RACES

5.1 The schedule of racing is as follows:

<b>Saturday 24 November 2018</b>	<i>Seven Islands Race</i>	<i>Inshore Passage Race</i>
Warning Signal	Code Flag W	1155hrs
<b>Sunday 25 November 2018</b>	<i>Windward-Leeward Races</i>	<i>3 Races Scheduled</i>
First Warning Signal	Code Flag W	1155hrs
Subsequent races will be started as soon as possible		

5.2 No Warning Signal will be made after 1500hrs on Sunday 25 November 2018.

## 6 CLASS FLAGS

6.1 The Class flag will be Code Flag W

## 7 RACING AREA

7.1 Racing will be conducted on the waters of Sydney Harbour.

## 8 THE START

8.1 The starting area for the Seven Islands Super 12 Fleet Race on Saturday 25th November will be in the vicinity of Hunters Bay, Balmoral.

8.2 The Start Line will be between a staff displaying an Orange flag on the Committee Vessel and the course side of the port-end start mark.

8.3 If Flag "V" is displayed on the Race Committee Vessel at or before the time of the warning signal, the first mark of the course shall be an orange inflatable mark laid a minimum of 0.2nm to windward of the starting line. Boats shall round this mark to Port if a red flag is displayed below Flag "V", or to Starboard if a green flag is displayed below Flag "V".

8.4 When an orange inflatable windward mark is laid, the second mark of the course shall be the first mark as described in Appendix A.

8.5 The starting area for Super 12 Windward-Leeward Races on Sunday 26 November will be in the vicinity of The Sound.

## 9 COURSES

9.1 The Course for Seven Islands Super 12 Fleet Race on Saturday 24th November is described in Appendices A & B.

9.2 The Course for Super 12 Windward-Leeward Races on Sunday 25th November is described in Appendix C.

9.3 The attention of competitors is drawn to the MHYC NOR and those areas which are designated obstructions and prohibited areas in the vicinity of the Gowland Bombora, the Sow and Pigs Reef, Circular Quay, Garden Island and Shark Island. A boat shall not sail into an area designated a prohibited area.

9.4 All competitors are requested to remain to the starboard side of shipping channels where practicable and shall leave the Safe Water Mark at Bradley's Head to Port on the return leg from Clark Island.

## 10 THE FINISH

10.1 The Finish Line for the Seven Islands Super 12 Fleet Race on Saturday 24th November will be the Clubhouse Finish Line as per MHYC NOR 17.

10.2 The Clubhouse Finish Line is a transit formed by aligning two orange triangles located adjacent to the MHYC Race Official's Box. The transit bears approximately 065°/245° magnetic and is illuminated after dark.

10.3 When finishing boats are requested to centre their mainsail in order to assist in the identification of competitors. Boats that cannot be identified will be scored 'DNF'. This amends RRS 63.1.

10.4 Boats are reminded of their obligation under RRS 24 to keep clear of boats that are still racing. A boat which has finished that is observed to interfere with a boat still racing or with the operation of the Clubhouse Finish Line may be disqualified. This amends RRS 63.

10.5 The Finish Line for the Windward-Leeward Races on Sunday 25th November will be between a staff displaying a blue flag on the Committee Vessel and the course side of the finish mark.

## **11 TIME LIMITS**

- 11.1 The time limit for Seven Islands Super 12 Fleet Race on Saturday 25th November will be 1700hrs. If the leading yacht finishes within the time limit, then finishes for other yachts will be timed until 1730hrs.
- 11.2 A boat that does not finish within the time limit shall be scored DNF. This amends RRS 35.
- 11.3 Time limits and target times for the Windward-Leeward Races on Sunday 25th November are as follows:
- |                   |            |
|-------------------|------------|
| Time limit        | 90 minutes |
| Mark 1 Time Limit | 30 minutes |
| Target Time       | 50 minutes |
- If no boat has passed Mark 1 within the Mark 1 time limit, the race will be abandoned. Failure to meet the target time will not be grounds for redress. This changes RRS 62.1(a).
- 11.4 Boats failing to finish within 15 minutes after the first boat finishes shall be scored DNF. This amends RRS 35.

## **12 ALTERNATIVE PENALTIES**

- 12.1 For an infringement of RRS Part 2, the Two-Turns Penalty (RRS 44.2) shall apply.
- 12.2 For an infringement of any other rule or requirement, the Scoring Penalties of RRS 44.3 shall apply. The penalty shall be computed as a percentage of the number of entries in the relevant division.

## **13 ABANDONED RACES**

Abandoned races will not be re-sailed.

## **14 PROTESTS**

- 14.1 Protests shall be submitted on forms available from the MHYC and lodged with or emailed to MHYC (sailing@mhyc.com.au) no later than two (2) hours after the last boat's finish time.
- 14.2 The Protest Committee will hear protests in the approximate order of receipt as soon as possible in the Commodores Room at MHYC.
- 14.3 Protest notices will be posted on the Online Notice Board (www.ssorc.mhyc.com.au) within 30 minutes of the end of protest time limit to inform competitors where and when there is a hearing in which they are parties to a hearing or named as witnesses. This notice fulfils the requirements of the RRS 61 to notify parties to a protest of the hearing time.
- 14.4 RRS 66 is changed by adding: "On the last day of racing, a party to the hearing may ask for a reopening no later than 20 minutes after being informed of the decision. If the party was informed of the decision on the previous day it shall ask for a reopening no later than the time limit for protests."
- 14.5 In accordance with RRS 64.1(a), for a breach of a rule of RRS Part 2, the Jury may award a disqualification or a time penalty. For all other rules the penalty shall be at the discretion of the Jury which may include no penalty.

## **15 RADIO COMMUNICATION**

- 15.1 Except in an emergency, while racing a boat shall neither make radio transmissions nor receive radio transmissions not available to all boats. This restriction also applies to mobile telephones.
- 15.2 Yachts shall maintain a listening watch on VHF Channel 72 for the duration of the race.
- 15.3 Competitors retiring from the race shall advise the RC on Channel 72 or the Sailing Office by phone 8969 3103 as soon as practicable.

## **16 PRIZES**

Prizes shall be presented at a post-race presentation.

## **17 RESPONSIBILITY**

- 17.1 Competitors participate in the MHYC Feature Race Program at their own risk. Special attention is drawn to RRS Fundamental Rule 4, which states: "The responsibility for a boat's decision to participate in a race or to continue racing is hers alone".
- 17.2 The Organising Authority, Event Sponsors, and their respective officers, employees, volunteers and members accept no liability for any injury, loss or damage that may be suffered by any competitor, and any liability for harm to persons that results from breach of an express or implied warranty that the MHYC Feature Race Program and all services relating thereto will be conducted or rendered with reasonable care and skill is excluded.
- 17.3 Neither MHYC, nor the event sponsors, are responsible for the seaworthiness of a boat whose entry is accepted or the sufficiency or adequacy of its equipment.

## APPENDIX A – SEVEN ISLANDS SUPER 12 FLEET COURSE

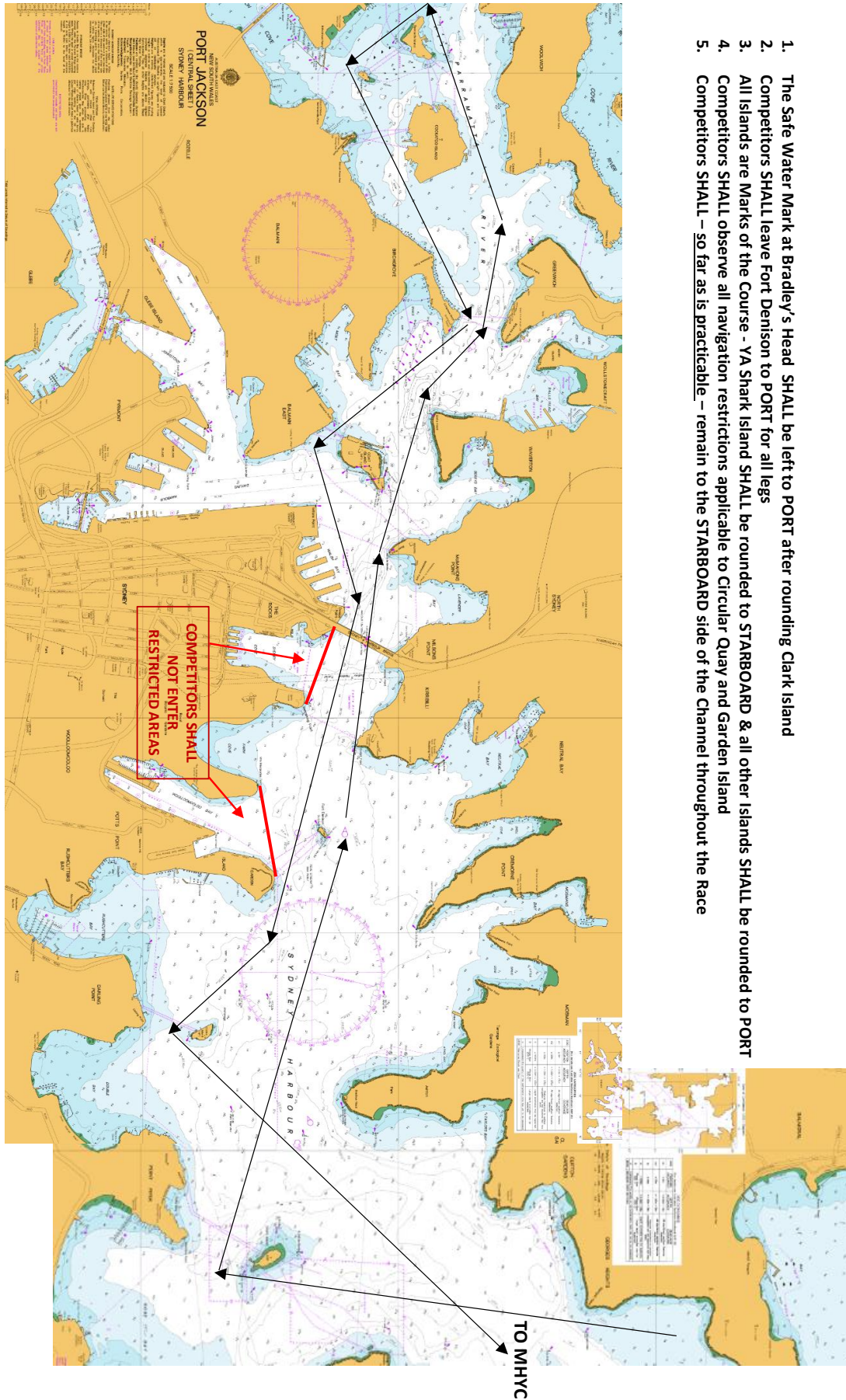
### THE COURSE

<b>Start</b>	Hunters Bay, Balmoral
*	Orange Inflatable Mark to Port or Starboard only if “V” displayed on Committee Vessel
1	AS Mark Shark Island (S)
2	Shark Island (S)
3	Fort Denison (P)
4	Cockatoo Island (P)
5	Spectacle Island (P)
6	Snapper Island (P)
7	Goat Island (P)
8	Fort Denison (P)
9	Clarke Island (P)
10	Bradley’s Head Safe Water Mark (P)
<b>Finish</b>	MHVC

### NOTES

1. All Islands are Marks of the Course and shall be rounded (or passed) to port (P) unless a starboard rounding is indicated by the suffix (S).
2. Competitors shall leave the Bradley's Head Safe Water Mark to **port** when passing Bradley’s Head
3. In accordance with RMS requirements, Fort Denison shall be left to **port** on all legs of the course.
4. Competitors shall observe all navigation restrictions applicable to Circular Quay and Garden Island.
5. A guide to the course, for illustrative purposes only, is attached to these Sailing Instructions at Appendix B.

# APPENDIX B – SEVEN ISLANDS RACE COURSE CHARTLET



1. The Safe Water Mark at Bradley's Head SHALL be left to PORT after rounding Clark Island
2. Competitors SHALL leave Fort Denison to PORT for all legs
3. All Islands are Marks of the Course - YA Shark Island SHALL be rounded to STARBOARD & all other Islands SHALL be rounded to PORT
4. Competitors SHALL observe all navigation restrictions applicable to Circular Quay and Garden Island
5. Competitors SHALL – so far as is practicable – remain to the STARBOARD side of the Channel throughout the Race

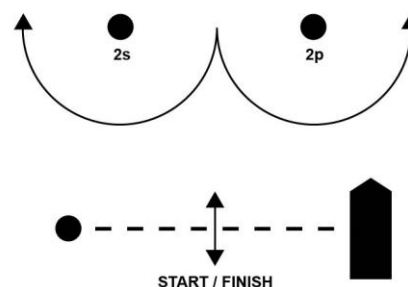
## APPENDIX C - SUPER 12 WINDWARD-LEEWARD COURSES

### 1 THE COURSES

- 1.1 The course to be sailed will be displayed on a Course Board on the Committee Vessel, preceded by the letter 'W', to indicate the number of rounding's of the Windward Mark.
- 1.2 The bearing to the first Mark from the Start Line may be displayed prior to or with the Warning Signal.
- 1.3 The Gate will be laid approx. 50m to windward of the Start Line and may be laid after the starting signal.
- 1.4 All Marks are rounded to PORT except the Gate. If only one Gate Mark is laid, boats shall round that Mark to Port.
- 1.5 An offset mark 1a will be laid adjacent to Mark A.
- 1.6 To change the next leg of the course, the race committee will lay a new mark (or move the finishing line) and remove the original mark as soon as practicable. In the event that the position of Mark 1 is changed, Marks 1 and 1a will be replaced by a new single Mark 1 and boats will round the new Mark 1 and proceed directly to the Gate or Finish. When, in a subsequent change a new mark is replaced, it shall be replaced by an original mark.



COURSE SIGNAL	COURSE CONFIGURATION
W1	Start – 1 – 1a – Finish
W2	Start – 1 – 1a – Gate 2s/2p – 1 – 1a – Finish
W3	Start – 1 – 1a – Gate 2s/2p – 1 – 1a – Gate 2s/2p – 1 – 1a – Finish



### 2 MARKS

Marks are described as follows:

COURSE MARKS	MARK DESCRIPTIONS
Start / Finish Mark	Inflatable Mark with Black & White Band
Mark 1 (Windward Mark)	Orange Inflatable Mark
Mark 1a (Offset)	Pink Inflatable Mark
Gate Marks	Orange Inflatable Marks
Change Of Course Mark 1	Orange Inflatable Mark with Black Band